

SIEMENS



DAIG Designo CC Extension Module (EM) for Designo CC 5.1, 6.0, 7.0, 8.0 Administration Manual

Unrestricted Siemens AG

SI SSP DE

Data and design subject to change without notice. / Supply subject to availability.

© 2024 Copyright by Siemens AG

We reserve all rights in this document and in the subject thereof. By acceptance of the document the recipient acknowledges these rights and undertakes not to publish the document nor the subject thereof in full or in part, nor to make them available to any third party without our prior express written authorization, nor to use it for any purpose other than for which it was delivered to him.

Unrestricted Siemens AG

SI SSP DE

Content

1	About this Document	7
1.1	Further Documentation	7
2	Security	8
2.1	Target Audience	8
2.2	General Safety Instructions	8
2.3	Meaning of Symbols	8
3	General Information	9
3.1	Terms of Use for Documentation	9
3.2	Supplementary Agreement for the Provision of Documentation	9
4	System Outline	10
4.1	Overview	10
5	Installation of the DAIG_049-Extension Module (EM)	11
5.1.1	Installation of the Extension Module (EM)	11
5.1.2	Adding the Extension Module (EM) to the Project	13
6	Configuration of the DAIG-driver and the DAIG-network within Desigo CC	15
6.1.1	Adding the DAIG-Driver	15
6.1.2	Adding and Configuring the DAIG-Network	16
7	Troubleshooting	18
7.1	After Creating and Starting the Driver	18
7.2	Verifying the Correct EM-Integration	19

Copyright

Copyright © 2024. Siemens AG. All rights reserved.

The information contained in this publication is company-proprietary to Siemens AG. This publication and related software are provided under a license agreement containing restrictions on use and disclosure and are also protected by copyright law. Reverse engineering / copying of any Siemens AG hardware, software, documentation, or training materials is strictly prohibited.

This publication and related software remain the exclusive property of Siemens AG. No part of this publication or related software may be reproduced, stored in a retrieval system, or transmitted in any form or by any means, electronic, mechanical, photocopying, recording or otherwise without the prior written permission from Siemens AG.

Due to continued product development, the information in this publication and related software may change without notice. Please report any errors to Siemens AG in writing. Siemens AG does not warrant that this publication or related software is error-free.

Any references to companies or persons are for purposes of illustration only and are not intended to refer to actual individuals or organizations.

Cyber security disclaimer

Siemens provides a portfolio of products, solutions, systems and services that includes security functions that support the secure operation of plants, systems, machines and networks. In the field of Building Technologies, this includes building automation and control, fire safety, security management as well as physical security systems.

In order to protect plants, systems, machines and networks against cyber threats, it is necessary to implement – and continuously maintain – a holistic, state-of-the-art security concept. Siemens' portfolio only forms one element of such a concept.

You are responsible for preventing unauthorized access to your plants, systems, machines and networks which should only be connected to an enterprise network or the internet if and to the extent such a connection is necessary and only when appropriate security measures (e.g., firewalls and/or network segmentation) are in place. Additionally, Siemens' guidance on appropriate security measures should be taken into account. For additional information, please contact your Siemens sales representative or visit <http://www.siemens.com/industrialsecurity>.

Siemens' portfolio undergoes continuous development to make it more secure. Siemens strongly recommends that updates are applied as soon as they are available and that the latest versions are used. Use of versions that are no longer supported, and failure to apply the latest updates may increase your exposure to cyber threats. Siemens strongly recommends to comply with security advisories on the latest security threats, patches, and other related measures, published, among others, under

For additional information on building technology security and our offerings, contact your Siemens sales or project department. We strongly recommend signing up for our security advisories, which provide information on the latest security threats, patches and other mitigation measures.

<http://www.siemens.com/cert/de/cert-security-advisories.htm>

Trademarks

Designo CC™ is a registered trademark of Siemens AG.

All other product or company names mentioned in this document are trademarks or registered trademarks of their respective owners and are used only for purposes of identification or description.

Contact


If you have questions or suggestions regarding the product or this documentation, please approach your Siemens correspondent:

Edition: 28.05.2024 v5.0.289.0, v6.0.145.0, v7.0.0002.9, v8.0.0001.1

1 About this Document

This document describes to the respective commissioning personnel, how to set-up and configure the DAIG-DCC Extension Module (EM). This EM serves as basis to all DAIG-based integrations of subsystems (such as for example IT-Monitoring or Siveillance Intrusion ADV/PRO (SiInt)).

Once successfully set-up and configured, EMs for specific subsystems can be installed and integrated into Desigo CC (DCC). For further information, please refer to the administration manuals for the respective EM (for example DAIG_CheckMk_049, DAIG_TranslinerPro_049).

	PLEASE NOTE
	The DAIG-Basis-EM in itself does not include any subsystem-interfaces. These are separate EMs and must be installed additionally.

1.1 Further Documentation

- Desigo CC 6.0 Operating Help
- Desigo CC 6.0 Engineering Help

2 Security

2.1 Target Audience

This document provides instructions for the following target readers:

Target Readers	Qualification	Activity	Condition of the Product
Commissioning/ maintenance/service personnel	Has specialized knowledge in IT systems, management systems and subsystems. Specific product training is required.	Installs and configures the DAIG extension module. Regularly checks on proper functional capability of the system, keeps the system up to date and manages the extension of the system.	Desigo CC including the DAIG extension module is installed and configured.

2.2 General Safety Instructions

Please note all instructions in this manual.

- Retain this document for reference purposes
- Always include this document with the product if it is transferred to a new owner

Loss of data when updating the software

Secure all your data before updating the software.

2.3 Meaning of Symbols



Tips and Information.

	PLEASE NOTE
	Includes additional information to a certain subject.

3 General Information

3.1 Terms of Use for Documentation

This documentation has been carefully tested for compliance with the hard- and software components described. However, discrepancies between the documentation and the software cannot be fully excluded. Therefore, we do not accept any liability for exact compliance.

The information in this guide is verified on a regular basis and any required corrections will be included in subsequent editions. We are always grateful for your user feedback and suggested corrections.

Please note, that the subsequently outlined supplementary agreement for the provision of RC-DE SI SSP documentation is applicable.

3.2 Supplementary Agreement for the Provision of Documentation

- You have the perpetual and non-exclusive right to partly modify, reproduce in an altered or unaltered manner and transfer either on paper or another data storage medium to third parties as part of this manual (subsequently referred to as administration manual) for the purpose of generating technical documents of systems which are equipped with the SI SSP software extension module DAIG_049.
- If adding other documentation into this administration manual and if any further document processing is done, please make sure that all safety -relevant instructions are maintained and kept visible.
- You have the sole responsibility for all included, unaltered or altered documentation.
- Reproduction and duplication of this documentation as well as the use and communication of its content is not permitted unless specifically approved.
- Do not delete Siemens copyright notes from the documentation.
- Document modifications must be pointed out accordingly, for example by an additional copyright notice.
- You are not authorized to use the company brand name SIEMENS.
- If using SIEMENS trademarks/brands in the administration manual, you must add a reference about this accordingly (for example by adding a note stating "...is a registered trademark (or brand) of SIEMENS AG")
- Contravention commits to compensation. All rights reserved, especially if a patent is granted, or the product is GM registered.

4 System Outline

4.1 Overview

DAIG will be delivered and provided as a Desigo CC-extension module (EM) which must be installed in addition to DCC. The name for the EM is DAIG (Desigo Application Integration Germany). It renders a common basis for the integration of subsystems, which are developed by SI DE.

The following components are made available:

- Desigo CC Object Modell for DAIG-driver and DAIG-network (library)
- DCC-surfaces to configure the DAIG-driver and the DAIG-network (Snap-Ins)
- DAIG Desigo CC-driver

5 Installation of the DAIG_049-Extension Module (EM)

5.1.1 Installation of the Extension Module (EM)

The Desigo CC DAIG_049-Extension Module (EM) is installed via “Update Desigo CC“, which belongs to the Desigo CC Program Suite:

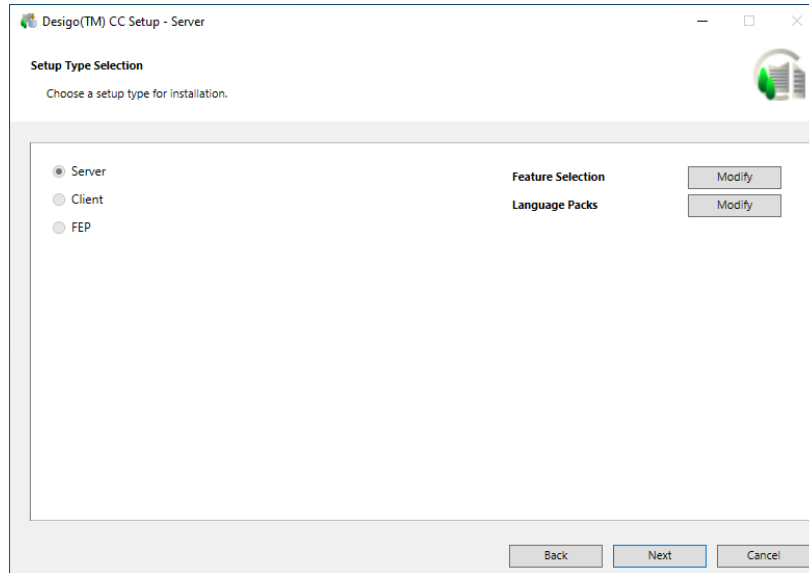


Figure 1: Update Desigo CC-Window

Execute: “Feature-Selection”-->”Edit“-Button

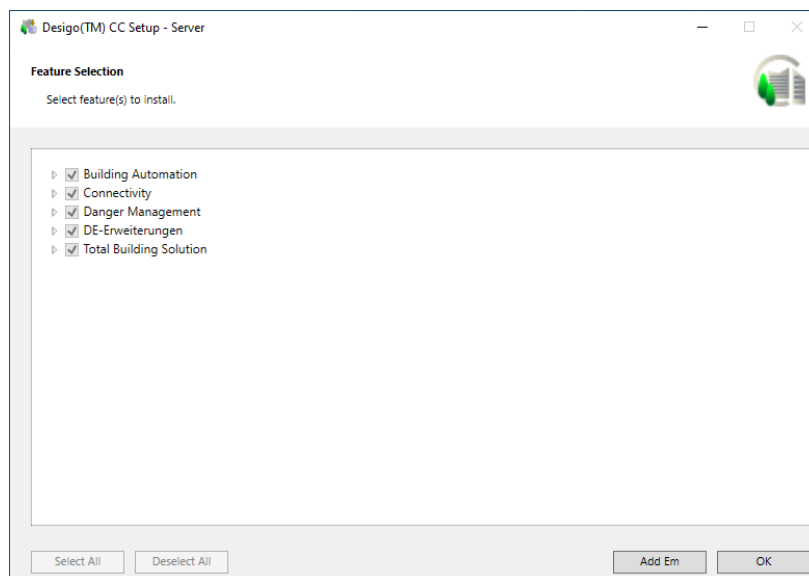


Figure 2: Update Desigo CC: Feature Selection

Confirm the “Add EM”-Button.

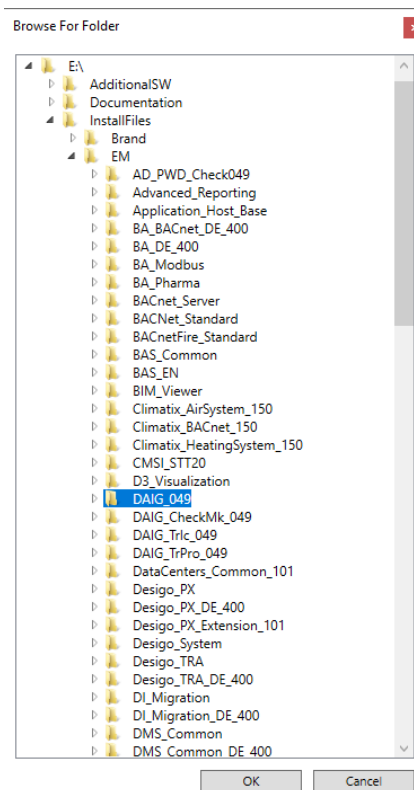


Figure 3: Update Designo CC: EM Selection

Select the folder DAIG_049.

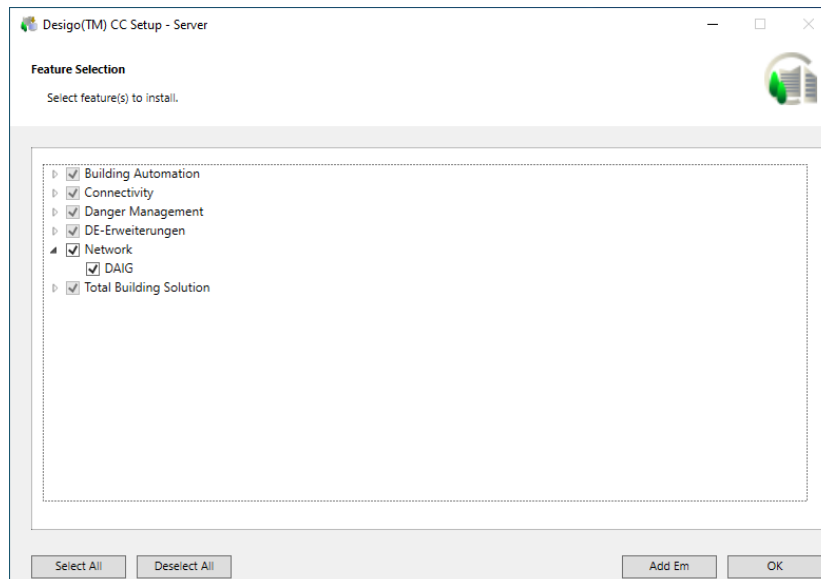


Figure 4: Update Designo CC: Network/DAIG Selection

Select the new feature "Network / DAIG". Click on "Ok" for going back to the installer.

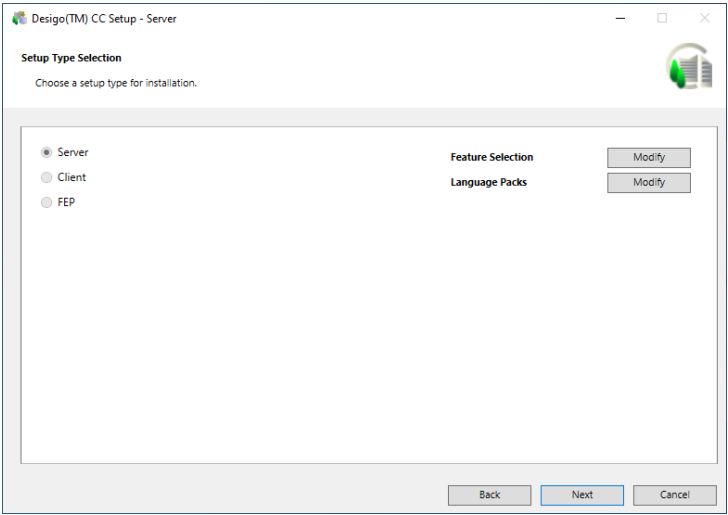


Figure 5: Update Desigo CC: Executing the installation.

Now, continue to navigate to execute the installation.

5.1.2 Adding the Extension Module (EM) to the Project

PLEASE NOTE

If adding an extension to an existing project, this project must be stopped first. If creating a new project with the EM, this must be done during the configuration process.

The DAIG-EM is added to the project via the Desigo CC System Management Console (SMC).

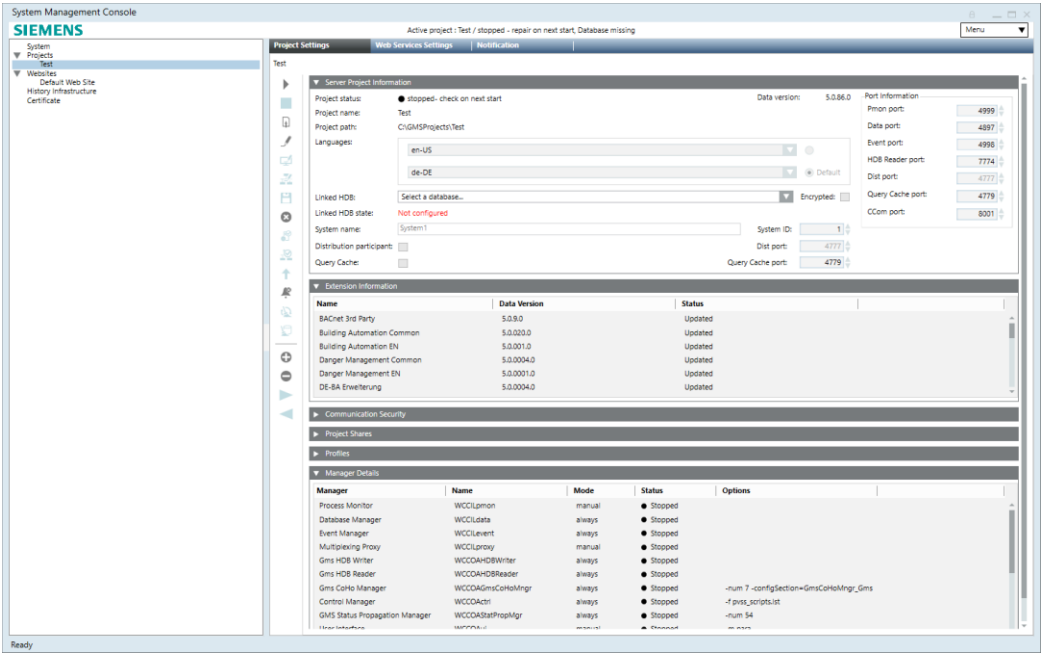



Figure 6: Adding the Extension Module (EM)

Please use/open the -button dialogue to add EMs:

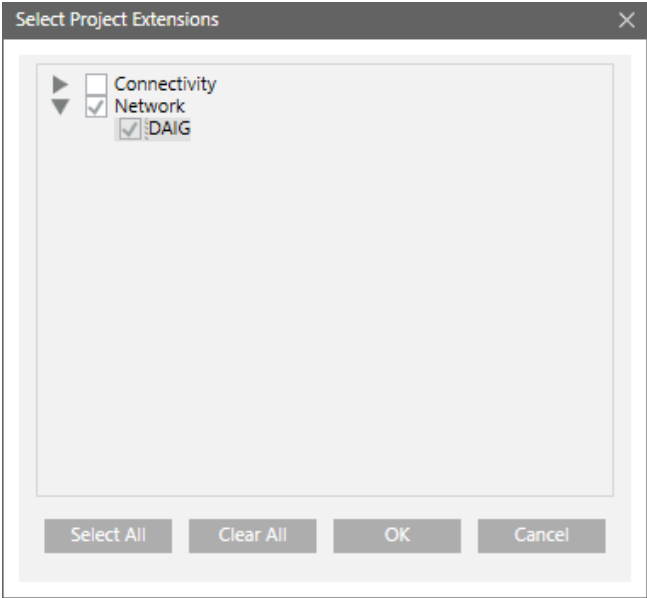



Figure 7: Dialogue Adding the Extension Module


Select DAIG-EM and confirm via 'OK'.

Click on  - Icon.

	PLEASE NOTE
	If websites and web-applications are to be used within the project, an upgrade of these must occur after the installation or update of the DAIG-extension module!

Please start the Desigo CC-project after adding the DAIG-extension module.

6 Configuration of the DAIG-driver and the DAIG-network within Desigo CC

	PLEASE NOTE
	The DCC user must have configurational rights to configure the DAIG-driver and the DAIG-network. All settings described below must be made in the configurational mode.

Please switch to the configuration mode in DCC by clicking on “operation”.

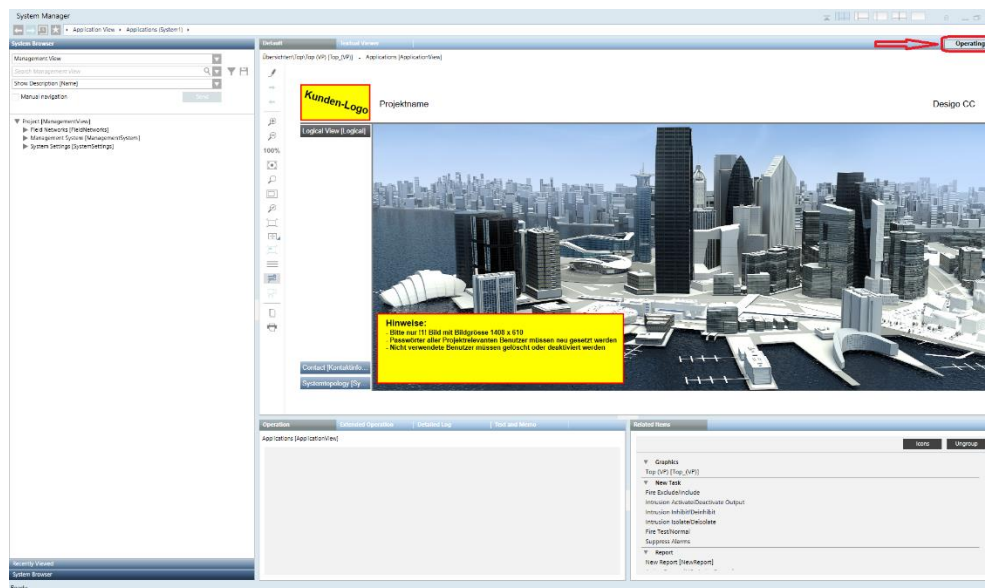


Figure 8: Desigo CC-window switching in the configurational view

6.1.1 Adding the DAIG-Driver

The DAIG-driver is added in the management-view, under management-station / server / <server> / driver:

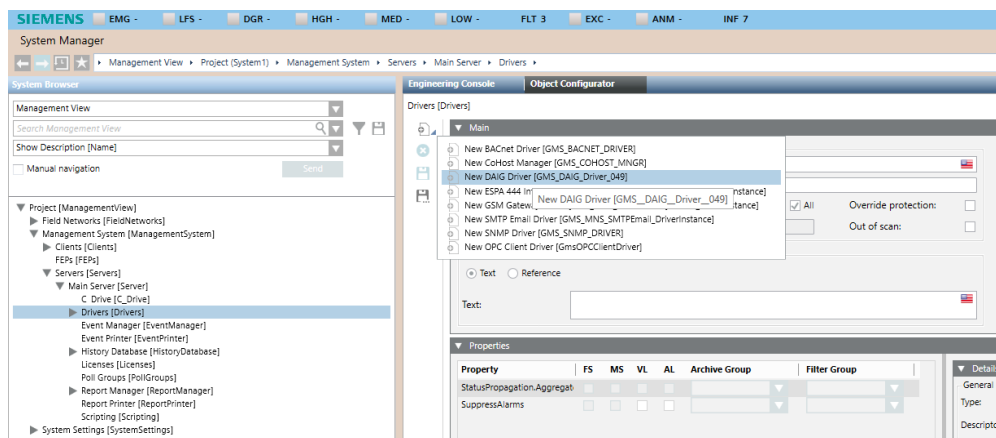


Figure 9: Desigo CC: Adding the DAIG-driver

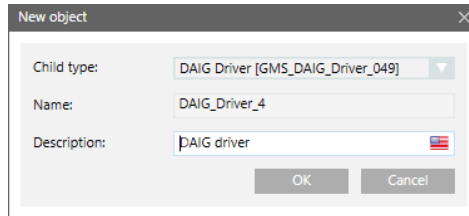


Figure 10: Dialogue, Adding the DAIG-Driver

If needed, the name for the driver can be changed.

!	PLEASE NOTE
	By default, the DAIG-driver will not start automatically.

The driver must be started manually via the **Extended Operation**.

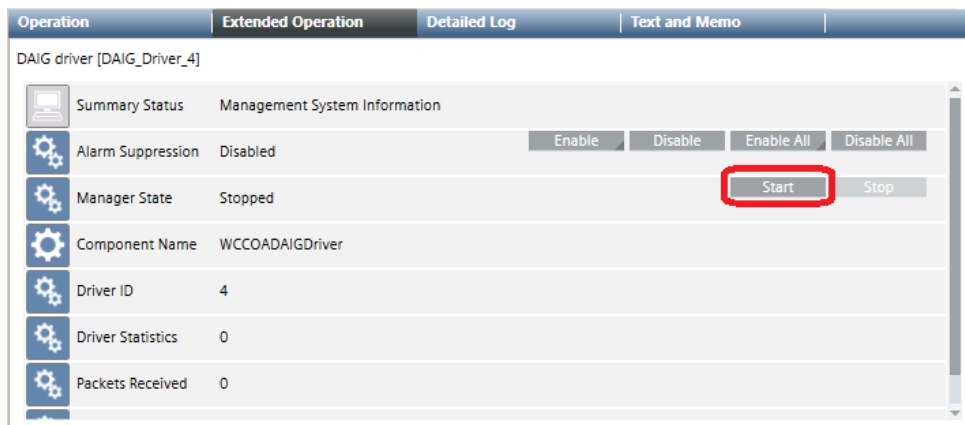


Figure 11: Extended Operation of the DAIG-Driver

6.1.2 Adding and Configuring the DAIG-Network

The DAIG-network will be created in the DCC-management-view, under “subsystem-networks”:

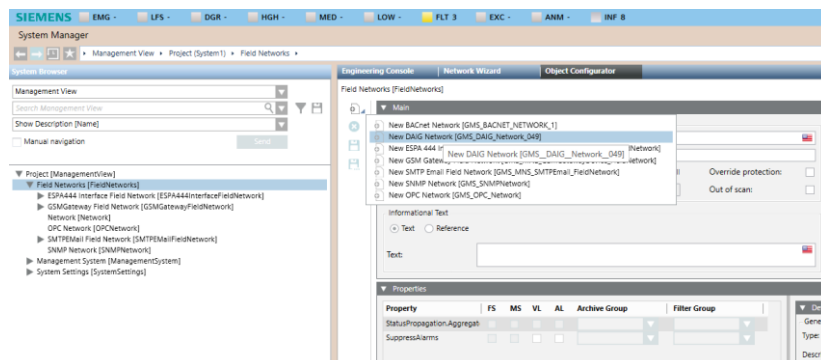


Figure 12: Designo CC: Adding a Network

Adding a network-type named “DAIG-network”

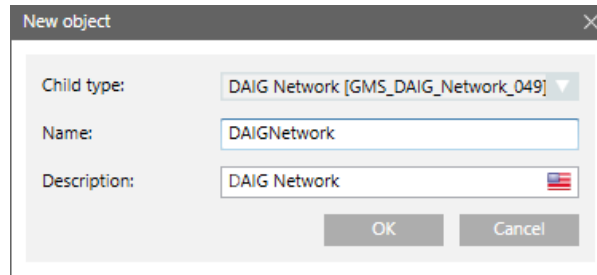



Figure 13: Dialogue to Create the Network

After adding the network, the DAIG-Driver must be assigned via the „DAIG“-tab. In addition, the configuration of the network must be saved via the  -Button.

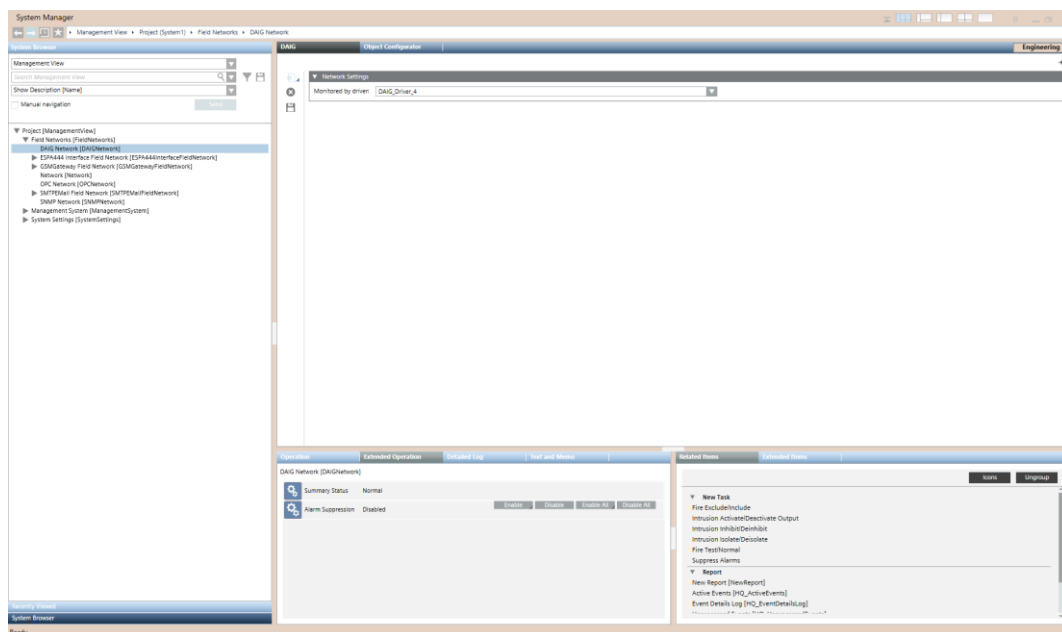

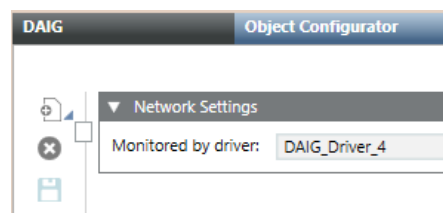


Figure 14: Assigning the DAIG-Driver to the Network

The installation and configuration of the DAIG-EM is now completed, and the DAIG-Driver is started. At this moment, no DAIG-based subsystems can be created (the corresponding EMs must be installed for this purpose). Therefore, the dialogue “new object”  will not yet display any subsystems (empty checkbox).



As soon as the subsystem-specific EMs are installed and added to the project, the individual sub-system types will be displayed accordingly.

7 Troubleshooting

7.1 After Creating and Starting the Driver

The correct execution of the driver can be verified, after creating and starting the driver:

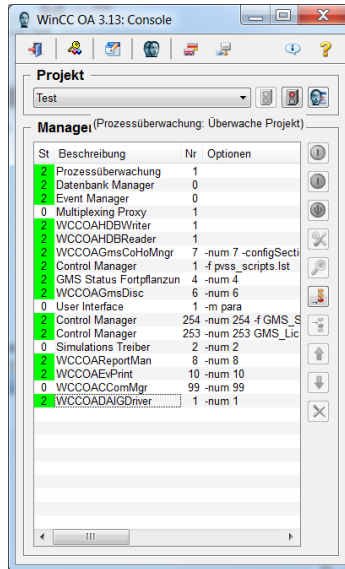


Figure 15: WinCC OA-Console with a Started DAIG-Driver (green)

The correct download of the basic module can be verified via the driver-log (C:\GMSProjects\<Projektname>\log: WCCOADAIGDriver1.log).

```
WCCOADAIGDriver(1), 2017.09.18 11:52:28.075, DBG, DAIGDriverHWSvc::loadDotNetModules(): Loaded module DotNetService
WCCOADAIGDriver(1), 2017.09.18 11:52:28.076, DBG, DAIGDriverHWSvc::loadDotNetModules(): Initialization succeeded
```

If the module named 'DotNetService' could not be loaded, the installation is corrupt. In this case, the DAIG-EM must be installed again by manually deinstalling the command-line from the EM-directory via msixexec (/x) and re-installing it accordingly (/i):

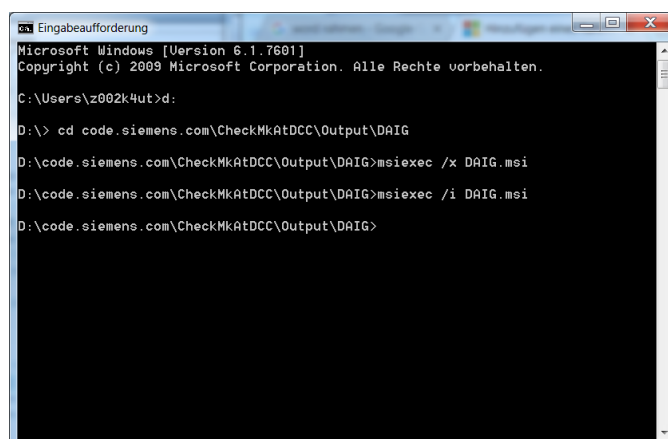


Figure 16: New/ Re-Installation of the EM-Module

7.2 Verifying the Correct EM-Integration

Upon correct and successful installation of the DAIG-EM in the previous steps, the library named “Global Daig 049 RC 1” can now be viewed via system browser / management view, under system settings / libraries / L3-countries / Global:

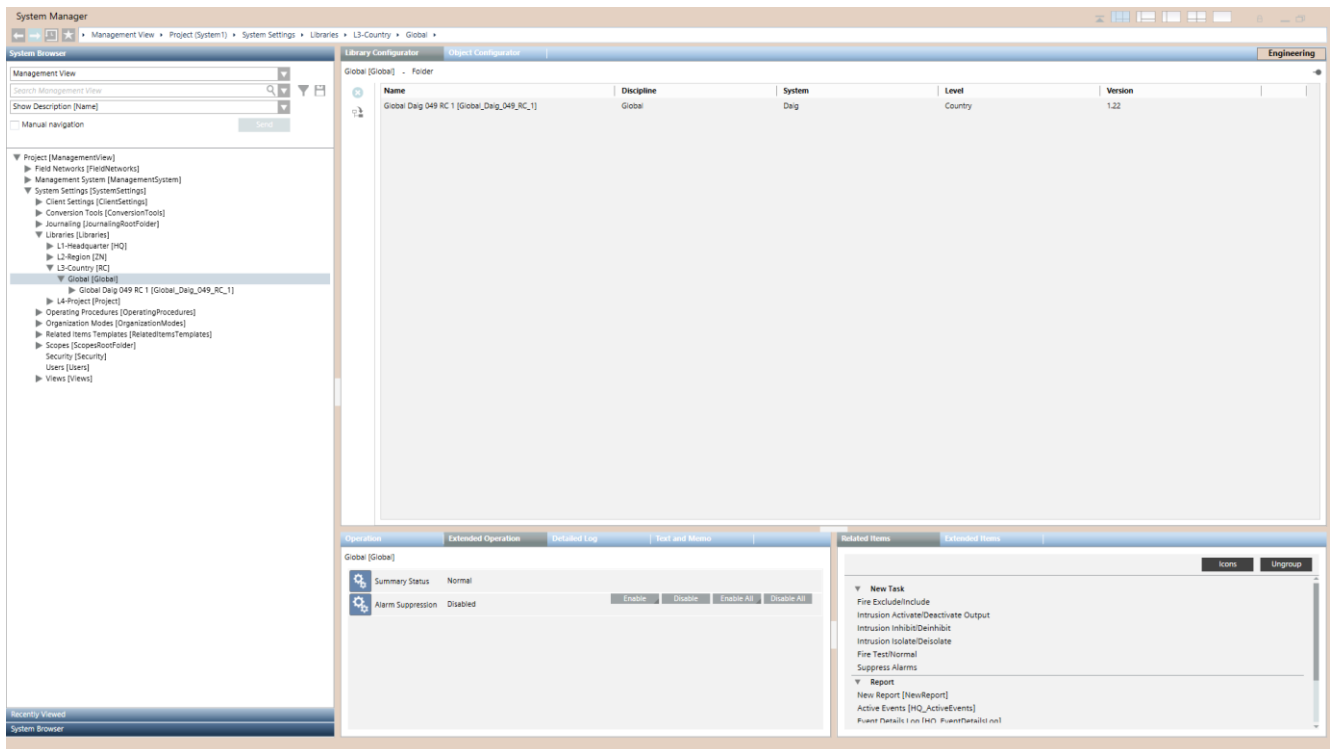


Figure 17: Designo CC: Verifying the Correct EM-Installation